

Fox Electronics Headquarters  
5570 Enterprise Parkway  
Fort Myers, FL 33905 USA  
Tel: 888-GET-2-FOX  
Outside US: +1.239.693.0099  
Fax: +1.239.693.1554

Fox Electronics EMEA  
14 Banks Road  
Biggleswade, Bedfordshire  
SG18 0DY, United Kingdom  
Tel/Fax: +44.1767.312632

Fox Electronics Asia  
4/F Gold & Silver Commercial Bldg.  
12-18 Mercer St.  
Central, Hong Kong  
Tel: +852.2854.4285  
Fax: +852.2854.4282

Fox Electronics Japan  
3-28-6-1A Yoyogi  
Shibuya-ku, Tokyo 151  
Japan  
Tel: +81.3.3374.2079  
Fax: +81.3.3377.5221

# Product Change Notification

**PCN Publish Date:** 11/07/2007

**PCN#:** 288

**Change Title:** Product Pin Documentation Changes

**Products Affected:** XpressO HCMOS Single Output XOs: 5x3.2mm and 7.5x5mm packages

Fox Model Number	Fox Part Number
FXO-HC53...	767-Frequency-xxxxx
FXO-HC73...	768-Frequency-xxxxx

\*(xxxxx = random number. For more information on Fox part numbers, see <http://foxonline.com/onefamilytype.asp> on the Fox website.)

**Description of Change to the Customer:** To show compatibility of the above parts with industry standard 4 pad circuit layouts, we are changing the documentation for pin designation and recommended solder pad layout to the industry standard 4 pad format. The two middle pins are test points and are No Connect.

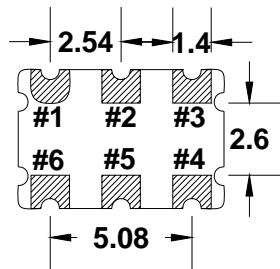
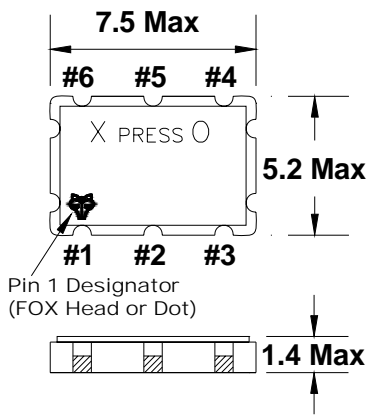
An example of the old and new documentation for the FXO-HC73 series is attached on the following page. (This example applies to the FXO-HC53 series also.)

This is a documentation change only; all specifications and functionality remain the same.

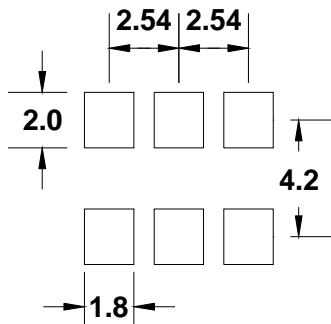
**Schedule of Change:** Change is effective immediately.

**Customer Impact and Response:** We believe this documentation change should have only a positive impact on our customers and help with comparing XpressO to traditional 4 pin parts. If you have any questions, please email Fox Technical Support at [www.foxonline.com/email.htm](http://www.foxonline.com/email.htm) or call 239-693-0099.

## Old Documentation

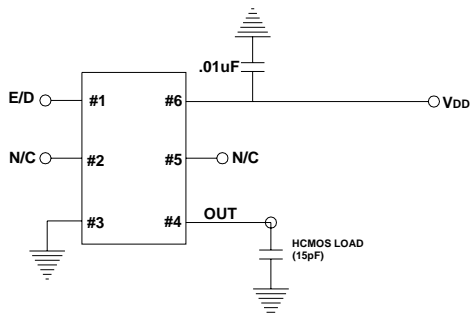


### Recommended Solder Pad Layout

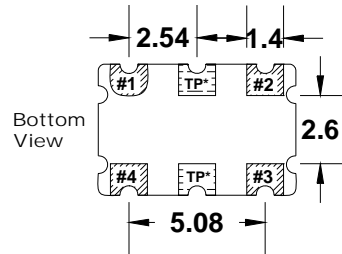
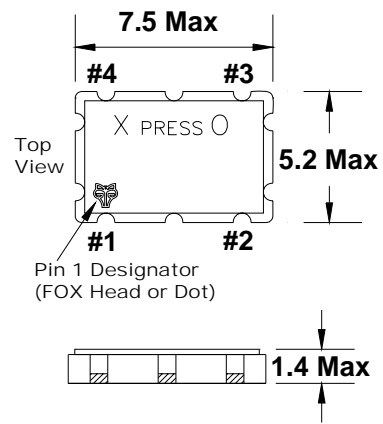


- Pin Connections**
- |         |            |
|---------|------------|
| #1) E/D | #4) Output |
| #2) NC* | #5) NC*    |
| #3) GND | #6) VDD    |
- \*NC is No Connect

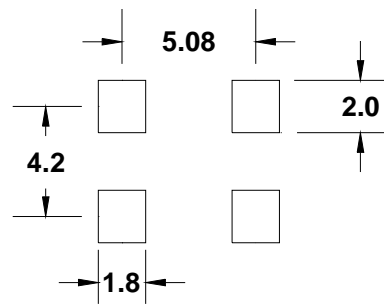
### Recommended Circuit



## New Documentation



### Recommended Solder Pad Layout



Note: XPRESSO HCMOS XOs are designed to fit on industry standard, 4 pad, layouts.

- Pin Connections**
- |         |            |
|---------|------------|
| #1) E/D | #3) Output |
| #2) GND | #4) VDD    |
- \*TP are test points and are NC

### Recommended Circuit

